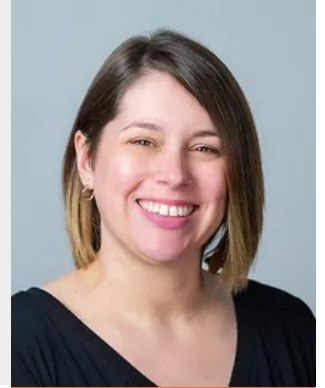


PlayRx Play Date

May 2024 - Kindergarten Transition

Staff Spotlight

Jennifer Wilson M.S., CCC-SLP currently serves as a Staff Speech Therapist in our Sherwood Clinic and surrounding partnered childcare centers. For the past two years she has served as the PlayRx Financial and Clinical Resource Lead, creating many valuable resources for therapists and families alike to help ensure that needed services are accessible, specifically TEFRA application. She is ESL (English as a Second Language) certified, Orton-Gillingham Certified, SOS Certified, and she is one of our go-tos for tethered tissues. She wants every child and family to have a voice!



PlayRx Outpatient Services vs School District Special Education Services

Pediatric outpatient therapy services are considered "private therapy", which are medically and developmentally based, reimbursable by Arkansas Medicaid and some private insurances for ages birth to 21 years if certain eligibility requirements are met on standardized testing. Private therapy plans are overseen by the child's PCP, are usually written for 12 months at a time, and are delivered in a one on one setting. Private Therapy recommendations are frequent and intense to ensure as much progress as possible during the length of the therapy plan. PlayRx Therapy Services are considered private therapy and can be accessed while attending PlayRx partnered daycare centers (for daycare, after school care, and/or summer care) or at our outpatient clinic in Sherwood.

School district special education services are based on the Individuals with Disabilities Education Act (IDEA). There are funding pots outside of insurances to cover these services. All services are educationally based. This means that qualification for school district services depends on if a child's deficit has an adverse effect on their ability to access their education. There will be a committee that reviews PlayRx evaluation reports and they may conduct further assessment. There is a possibility that your child's school district will determine that therapy is not warranted, even with qualifying evaluations from PlayRx or another private outpatient therapy company. In the event they find school district therapy is warranted, it will likely be at reduced time per week, compared to PlayRx or other private outpatient therapy recommendations, and therapy may be provided in a group setting.

PlayRx
Partnered
Daycare Centers



Kindergarten Transition of PlayRx Services

When children become age eligible for Kindergarten, PlayRx provides a Kindergarten Transition packet that includes the child's School District Special Education contact information along the child's most recent PlayRx evaluation reports. Parents are encouraged to contact the LEA in their child's school district and take this packet to kindergarten registration.

Students who are 5 on or before August 1st of the current school year, may register at any time for kindergarten. Documentation required for registration are as follows:

- Birth certificate
- Social security card or number or equivalent if coming from another country
- Current shot record
- Proof of address: Any ONE of the following: Current Electric bill in the name of a guardian (Water, Gas, or Lease agreement/mortgage statement)
- Parent-Student Handbook Signature Pages for your school
- Home Language Survey

Contact Information for Kindergarten Registration

ESTEM East Village and Downtown

Jolie Whitley
Special Education LEA
(501) 214-6707
Jolie.whitley@estemschools.org

Maumelle Charter School

Jennifer Penney, Special Ed Teacher
Jennifer.penney@academicsplus.org
Jacey Case, LEA
jacey_case@academicsplus.org
501-851-3333
<https://applyacademicsplus.schoolmint.com/>

Pulaski County Special School District

Cindy Smith
(501) 234-2453
Fax: (501) 490-0541
Online Registration
(infinitecampus.org)

North Little Rock School District

Marcia Dean, M.S.
School Psychology Specialist/Early Childhood
Facilitator North Little Rock School District
2200 N. Poplar St. North Little Rock, AR 72114
(501) 771-8033 or (501) 252-1006
cleanm@nlrsd.org
Registration | North Little Rock School District
(nlrsd.org)

ESTEM Downtown

Melissa Bravo
Downtown Elementary Director
501-748-9269

Jacksonville/North Pulaski School District

Christy Darrington Special Education
Director
501-457-5150
cdarrington@jnpd.org
1414 W. Main Street Jacksonville, 72076
501.241.2080
Sign In - North Little Rock School District
(powerschool.com)

School District
Contact
Information

Kindergarten Readiness Checklist



Preparing for kindergarten is an exciting milestone for both children and parents alike. The Arkansas Early Childhood Commission provides this checklist to ensure parents know the skills needed for their child to thrive in this new environment. From basic academic skills like recognizing letters and numbers to social and emotional readiness such as following directions and interacting with peers, the checklist covers a wide range of areas. By using the checklist as a guide, parents can identify areas where their child may need additional support and provide opportunities for growth and development.

Staff Anniversaries: Summer Stussy one year anniversary!

Important Dates: May is Better Hearing and Speech Month and Mental Health Awareness Month

May 6-10: Teacher Appreciation Week

May 12: Mothers Day

May 27: Memorial Day

Help Us
Celebrate!

PlayRx Resources



Learn more about our staff here: <https://www.playrxtherapy.com/our-staff/>

For more info on appropriate child development see our developmental milestones checklists:
<https://www.playrxtherapy.com/developmental-milestones/>

For information and guidance on resources to support services for your child, contact our Resource Manager: jwilsonst@playrxtherapy.com

Scan the codes or click text below to:

[Visit our site](#)



[facebook](#)



[Instagram](#)



[Resource Guide](#)

