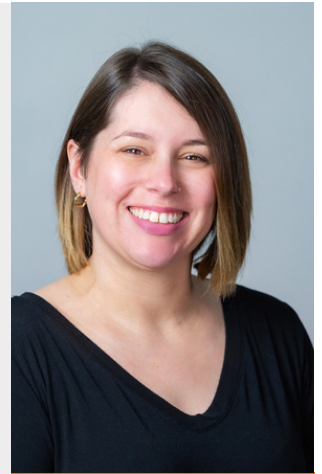


# PlayRx Play Date

October 2023

## Staff Spotlight

Jennifer Wilson - MS, CCC-SLP serves as a therapist in our new clinic and in Sherwood area centers. She also serves as the PlayRx Financial and Clinical Resource Lead providing education and support about additional financial and educational community and state resources for children and families to ensure each client can get all the services they need. She is ESL (English as a Second Language Certified), Orton-Gillingham Certified, SOS Certified, and is one of our go-tos for Tethered Tissues. She wants every child and family to have a voice!



## What Is Tongue Tie?

Tongue tie (also known as ankyloglossia), is a condition that restricts the tongue's normal movement. A tongue tie develops in utero during normal development of the tongue and floor of mouth and is present from birth. The International Affiliation of Tongue Tie Professionals has defined tongue tie as "an embryological remnant of tissue (lingual frenulum) in the midline between the under surface of the tongue and the floor of mouth that restricts normal tongue movement".

## Indicators of possible tongue/lip tie:

- Tongue thrust
- Misaligned teeth
- Snoring/sleep apnea
- Mouth breathing
- Jaw pain and TMD
- Teeth clenching/grinding
- Headaches
- Neck/shoulder pain and tension
- Selective eating
- Poor latch when nursing (infants)
- Poor weight gain/failure to thrive (infants)
- Nipple pain during/after nursing

\* For breast and bottle feeding tips click [here](#) or scan the QR code

## Developmental Tips About

## Tongue Tie



## Play at Home



## This month, it's all about scavenger hunts!

Fall scavenger hunts are great ways to get outside and play while also incorporating speech and language. There is so much going on in nature during the fall from the changing of leaves to squirrels gathering nuts for winter to birds migrating. Fall Nature Scavenger Hunts help kids identify and observe what is happening in nature all around them during the fall.

Click [here](#) or scan the QR code for a fun scavenger hunt bingo activity to use with your little one.

## Pumpkin Patches!

Some of Ms. Jennifer's favorite places to visit with her family in the fall are pumpkin patches! Her family's three favorite patches are:

### BoBrook Farms in Roland



### Hicks Family Farm in Lonoke



### Motley's Pumpkin Patch in Little Rock



Play in the  
Community

## Community Spotlight



### Big BOO!seum Bash

**What?** - Halloween party hosted by the museums of downtown Little Rock! Shuttles between museums, fun activities, and trick or treating!

**When?** - the Thursday before Halloween!

Click [here](#) for some great communication boards for helping your little one communicate all the fun things about Halloween!

**Staff Birthdays:** Kalli Glass

**Congratulations:** Jennifer Wilson on her 1st anniversary with PlayRx and her creation of our new [Resource Guide for Families of Children with Special Needs!](#)

**Important Dates:** Happy Halloween!

Help Us  
Celebrate!

## PlayRx Resources

Learn more about our staff here: <https://www.playrxtherapy.com/staff>

For more info on appropriate child development see our developmental milestones checklists: <https://www.playrxtherapy.com/developmental-milestones/checklists>

For information and guidance on resources to support services for your child, contact our Resource Manager: [jwilsonst@playrxtherapy.com](mailto:jwilsonst@playrxtherapy.com)

Scan the codes or click text below to:

[Visit our site](#)



[facebook](#)



[Instagram](#)



[Resource Guide](#)

